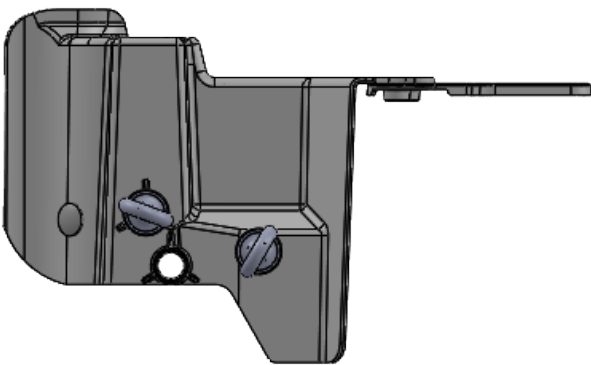
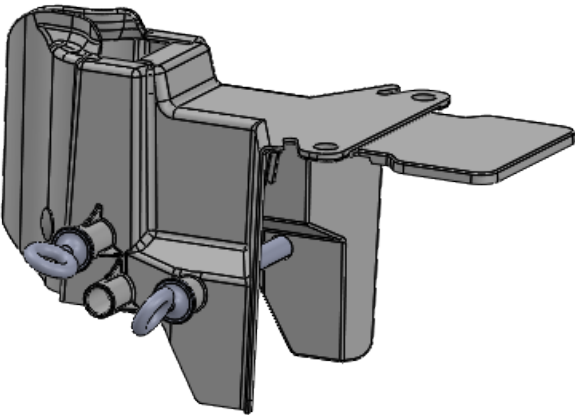


ECC-10UCE

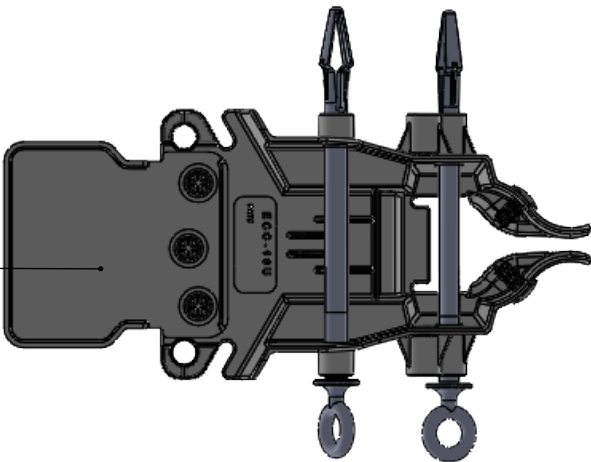
Designed for the S&C SMD 20 cutouts, porcelain and polymer.
Includes the extension in the front for added coverage.
Available in FR rated material.
UL 94 5VA rated.

For FR material add FR, Part # ECC-10UCE-FR.

For porcelain insert the pins high and low as shown.
For polymer insert pins in the lower two holes.



Side View



Bottom View

Warning!

- 1. High Voltage can cause death or serious injury.
- 2. This product is NOT PPE (Personal Protective Equipment). It is not designed to protect humans from electrical hazards, electrical arcs, or flashover.
- 3. Always follow safe working procedures, safety standards, and guidelines. Always use approved live line tools and PPE, rubber gloves, and sleeves if required, during installation, removal, and maintenance.

PROPRIETARY AND CONFIDENTIAL
THE INFORMATION CONTAINED IN THIS DRAWING IS THE SOLE PROPERTY OF ECO ELECTRICAL SYSTEMS. ANY REPRODUCTION IN PART OR AS A WHOLE WITHOUT THE WRITTEN PERMISSION OF ECO ELECTRICAL SYSTEMS IS PROHIBITED.

		UNLESS OTHERWISE SPECIFIED:		NAME	DATE	TITLE: ECC-10UCE		
		DIMENSIONS ARE IN INCHES	DRAWN	ML	4/14/20			
		TOLERANCES:	CHECKED					
		FRACTIONAL	ENG APPR.					
		ANGULAR: MACH BEND	MFG APPR.					
		TWO PLACE DECIMAL				SIZE B		
		THREE PLACE DECIMAL						
		INTERPRET GEOMETRIC TOLERANCING PER:	Q.A.			DWG. NO.		
		MATERIAL	COMMENTS:					
		HDPE				REV 1		
NEXT ASSY	USED ON	FINISH						
		SMOOTH				WEIGHT:		
APPLICATION		DO NOT SCALE DRAWING						
						SHEET 1 OF 1		